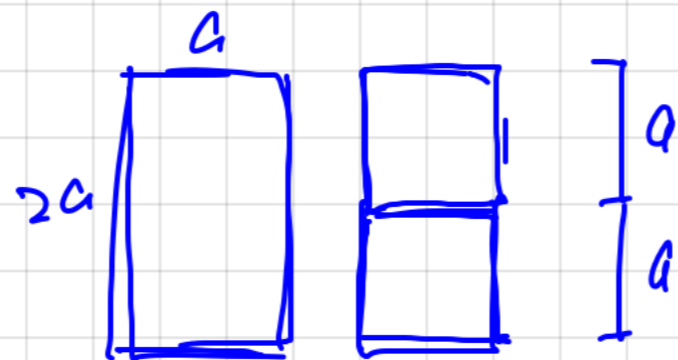
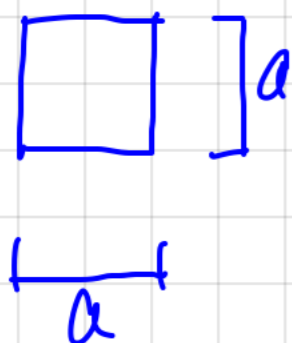
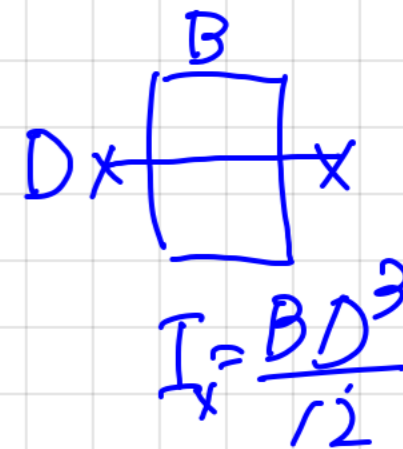
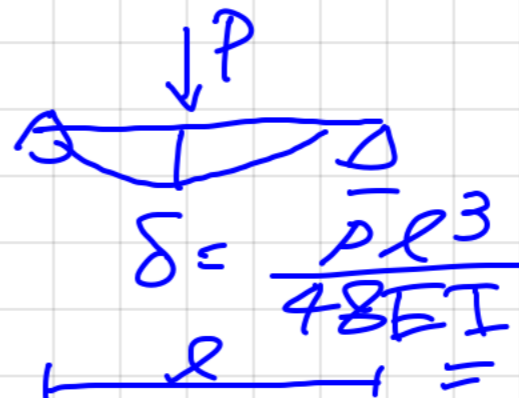
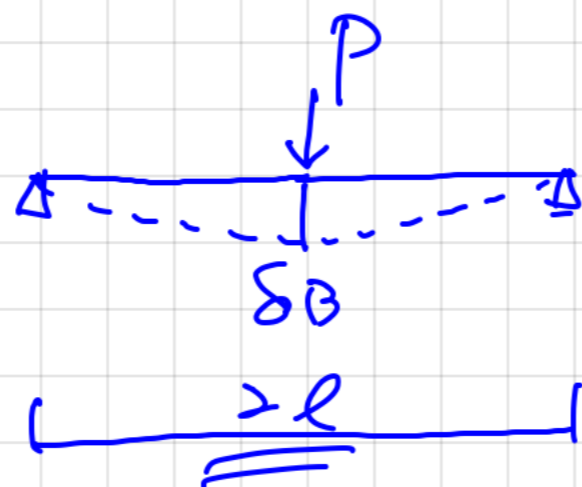
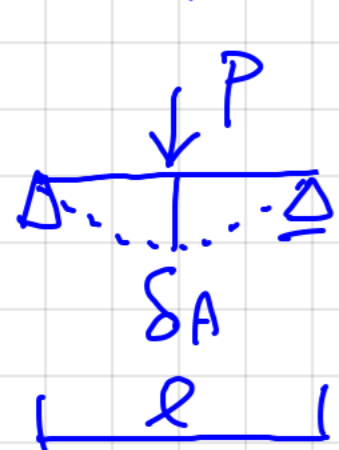


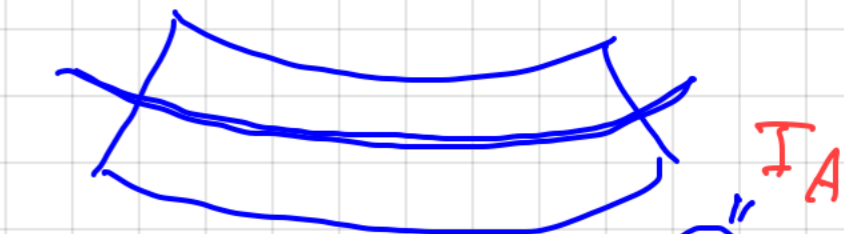
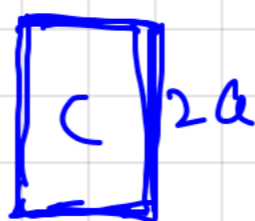
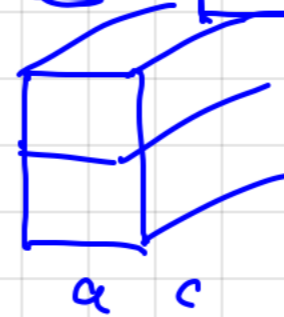
Prob 29 NO. 2

$\delta_A : \delta_B$ & I_C



$$I_A = \frac{a \cdot a^3}{12} = \frac{a^4}{12}$$

$$I_B = 2 \cdot \frac{a^4}{12} \Rightarrow 2I_A$$



$$I_C = \frac{a(2a)^3}{12} = \frac{8a^4}{12} = 8I_A$$

$$\delta_A = \frac{Pl^3}{48EI_A}$$

$$\delta_B = \frac{P(2l)^3}{48E(2I_A)}$$

$$= \frac{Pl^3}{48EI_A} \cdot \frac{8}{2}$$

$$= 4 \frac{Pl^3}{48EI_A} \Rightarrow 4\delta_A$$

$$\delta_B = 4\delta_A$$

$$\delta_A : \delta_B = 1 : 4$$

$$\delta_C = \frac{P(2l)^3}{48E(8I_A)} = \frac{12l^3}{48EI_A} = \delta_A$$